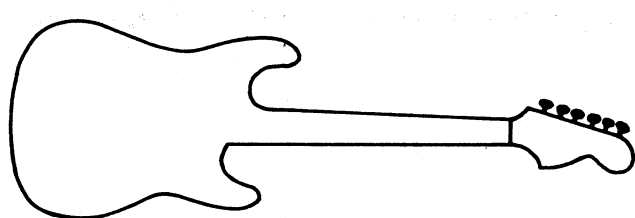


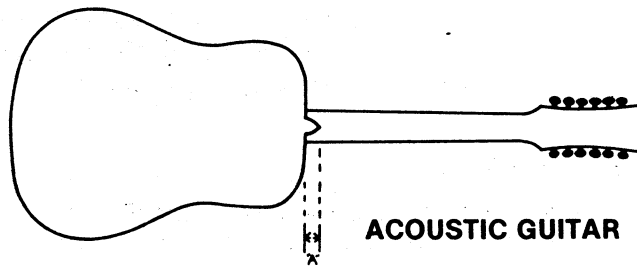
Guitar Case Ordering Instructions

The following information will greatly aid you in ordering your ANVIL® Guitar Case. If you will provide us with the tracing and measurements requested, we will provide you with both improved service and accuracy, which will help to keep your Guitar looking like new.

First, lay the Guitar on a flat, level surface, on the tracing paper supplied. Use a pencil to trace the exact outline of the Guitar, as in the sample drawing below. Be sure to keep the pencil straight up and down so as not to distort the actual shape of the Guitar. On acoustic Guitars, be sure to show how far the heel extends from the rest of the body. See dimension "A".



ELECTRIC GUITAR



ACOUSTIC GUITAR

Next, give us the measurement from the top of the measuring surface to the **highest** point on the Guitar (bridge, knobs, pick-ups, etc.). See dimension "B".

Now, measure the distance between the measuring surface and each of three points along the neck of the Guitar. See dimensions "C", "D" and "E". For Electric Guitar that will not lay flat on the measuring surface (Fig. 3), place the Guitar so the neck is parallel to the measuring surface. Also, show dimension "F" for blocking under body of Guitar.

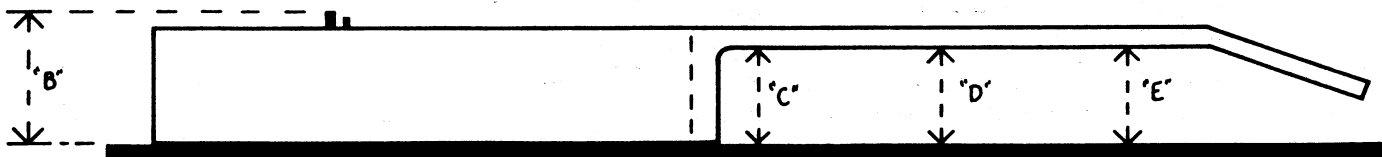


FIG. 1 — ACOUSTIC



FIG. 2 — ELECTRIC

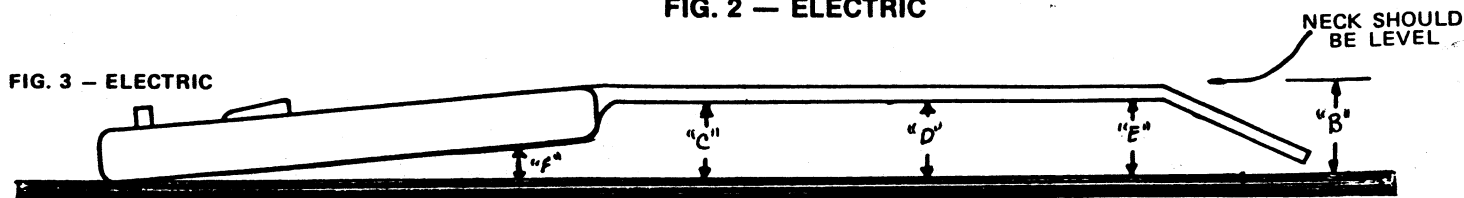


FIG. 3 — ELECTRIC